

Lecture #21 – Making An Egg

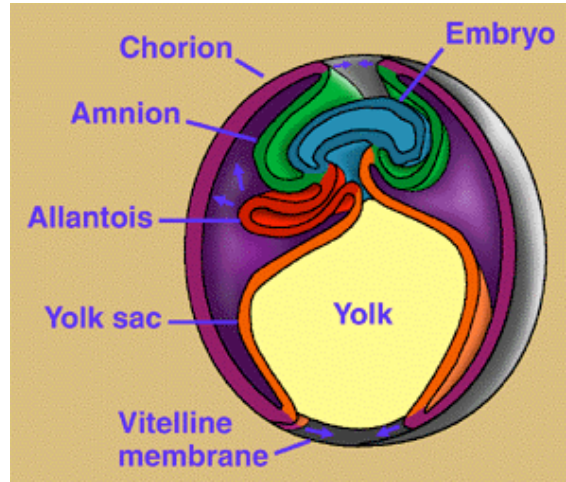
I. Amniota

A. Evolutionary Diversity

1. Mammalia
2. Reptilia

B. Adaptive Characters

1. Amniotic Egg
 - a) **Amnion**
 - b) **Chorion**
 - c) **Allantois**
 - d) **Yolk sac**
 - e) Protective **shell**
2. No aquatic larvae
3. Impermeable Skin
4. Copulatory organ
 - a. Internal Fertilization
5. Excrete Urea or Uric Acid
 - a. Amphibians excrete ammonia
6. Respiration by Lungs throughout life

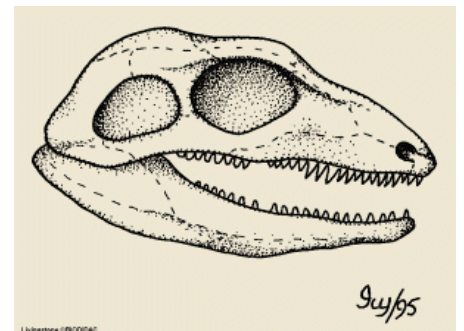
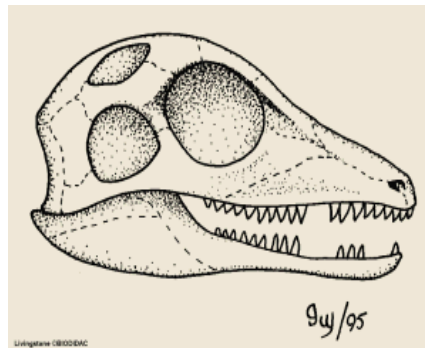
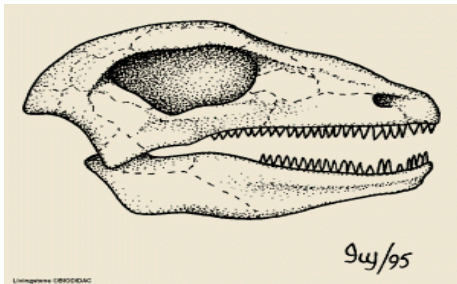


II. Testudines (Turtles)

A. Morphological Characters

1. Shell
 - a. **Carapace**
 - b. **Plastron**
2. **Lack teeth**
3. **Oviparous**

B. Evolutionary Diversity



Reading: Chapter 18 - pages 356-363.
Questions: Page 373 – 1, 2, 3, 4, 5, and 6.